



Photo by Sheng-lu Wu

# The Shepherd's Voice

March/April 2025

## PASTOR'S NOTE:

Greetings in the name of Jesus Christ, our Savior and Lord!

*Jesus said, "You have heard that it was said, 'You shall love your neighbor and hate your enemy.' But I say to you, Love your enemies and pray for those who persecute you, so that you may be children of your Father in heaven; for he makes his sun rise on the evil and on the good, and sends rain on the righteous and on the unrighteous."*

Matthew 5:43-45

*Jesus said, "Why do you see the speck in your neighbor's eye, but do not notice the log in your own eye? Or how can you say to your neighbor, 'Friend, let me take out the speck in your eye,' when you yourself do not see the log in your own eye? You hypocrite, first take the log out of your own eye, and then you will see clearly to take the speck out of your neighbor's eye."*

Luke 6:41-42.

As you receive this newsletter, we will be ready to begin the season of Lent. We will have the opportunity to have fun, eat pancakes, enjoy each other's company, and fundraise to help equip ourselves for the ministry we will do together throughout this year.

*(Continued on page 2)*

Lent is a season that is often associated with actions such as giving to those in need (almsgiving), prayer, and fasting. It is a season we often speak of in terms of a journey. It is a journey we make both individually and together, as we journey with Jesus, and we follow him all the way to the cross. This year our theme for this season of Lent is: Reflection, Repentance, Redemption.

Lent is the kind of season of the church year that invites us to acknowledge our own sinfulness and mortality, and then culminates with Holy Week and Easter Sunday, where we acknowledge grace and forgiveness, and new life and resurrection.

I hope you will plan to participate fully in this upcoming season of Lent, beginning unofficially with our Fat Tuesday Pancake Dinner and Silent Auction on Tuesday, March 4th. It then officially begins the next day on Wednesday, March 5th, with our Ash Wednesday worship service at 7:00 PM. From there, throughout the Lenten season, on the following Wednesday evenings, we will have a soup supper at 6:00 PM, and worship services following at 7:00 PM. All of this leads up to Holy Week: Maundy Thursday, Good Friday, all culminating with Easter Sunday. What a journey it promises to be for us individually, and together as a faith community.

This past Sunday in worship, we heard Luke's account of the scripture text above, from the Gospel of Matthew. As was acknowledged in the message on Sunday, obeying Jesus' words to love our enemies is not easy to do. A key point was made that it does not matter what others do, with respect to what we are called to do. For example, regardless of how others act, as we heard in Luke's Gospel, we are called to "Love our enemies, do good to those who hate you, bless those who curse you..."

This brings us to the second scripture text above, the one from Luke 6:41-42. This is the next part of Jesus' Sermon on the Plain.

Like all of Jesus' words and teachings, this has meaning for how we are to live our lives today. Ap-

proximately six weeks ago, Rev. Mariann Budde, Episcopal Bishop of Washington, D.D., gave a sermon at the National Prayer Service at the Washington National Cathedral. Rev. Budde's sermon caught international attention because she called out newly re-elected President Trump to show mercy. Many people cheered and rejoiced that President Trump was effectively a captive audience, and Rev. Budde took the opportunity to, as I heard one commentator (not a GSLC member) say, "Rev. Budde let Trump have it."

We spent part of two of our adult Sunday school classes discussing all of this. In addition, several of you asked me what I thought about all of this.

To begin with, let me say, and I hope this is a reminder, that Jesus Christ and his Good News is political. Jesus and his message upset the people in power. That said, Jesus is not a Democrat or a Republican. He is not a progressive or a conservative. When he said that he came to care for and share Good News with the least of these, he meant all of them, not just the "least" that suited one's political agenda. When he tells us that we are to love our enemies, he means all of them.

That said, my issue was not with Rev. Budde's sermon, but rather with some of the reactions to it. Rev. Budde made some interesting choices in the sermon, but that is the case with every pastor and preacher who goes about prayerfully opening themselves up to share, not a message of their own, but instead to share God's word, God's message, with the hearers. For example, one interesting choice Rev. Budde made was to call out President Trump directly. I have never called out one of you directly in a sermon. If you have ever felt that way, that is, convicted by the words of a sermon, rest assured that is the work of the Holy Spirit. It has often been said that the Holy Spirit will comfort the afflicted, and afflict the comfortable.

Again, my issue was not with Rev. Budde's call for mercy to those who Jesus sees as the least of these, all those in need of care, blessings, and Good

*(Continued on page 3)*

News. As we heard in this past Sunday's Gospel, Jesus told us that God the Father "is kind to the ungrateful and the wicked." Jesus also told us to "be merciful, just as our Father is merciful."

However, many voices were rejoicing that Rev. Budde had called out President Trump publicly, shamed him, that she really "gave it to him." In short, they were happy that a sermon was aimed directly at President Trump.

If we were to think of cheering for a sermon that was targeted directly at one person, whether that person was a president or not, and whether it was a president we agreed with or not, I pray that what we would hear next would be Jesus asking us, "Why do you see the speck in your neighbor's eye, but do not notice the log in your own eye?" The fact of the matter is, it will always look to us as if our neighbor has a log in their eye, as long as we have a log in ours.

My issue was how so many people responded to Rev. Budde's sermon. Yes, Rev. Budde specifically said, "Mr. President... I ask you to have mercy upon the people in our country who are scared now... transgender children... immigrants..."

Our call as Christians, as followers of Jesus Christ is to love all people, friends and enemies alike. And before we cheer at someone else's naming, shaming, or downfall, remember to take the log out of our own eye first, so we can see straight and move forward being merciful, as our God is merciful.

It is my prayer that this season of Lent, and our theme of Reflection, Repentance, Redemption, will help us do exactly that.

Grace and peace,  
Pastor Ted

## JUSTICE • MATTERS

Good Shepherd is working with 13 other congregations to address systemic issues. Youth Trauma is our newest issue this year. We invite our entire congregation to join us at the Nehemiah Action Assembly on Monday, May 5<sup>th</sup>. We will take action to address Youth Trauma in our community by presenting research and proposing solutions to improve care for our youth.

Each of you will receive an invitation from one of our Network Members. When you are contacted by one of them, please listen to what they have to say and prayerfully consider accepting your invitation.

Please accept an invitation from Mark Algren, Judy Halverson, Deb McDonald, Mark McDonald, Mark Miller, Sharon Miller, Mary Ricke, Trudy Rinne, Gary Sanden, Barbara

Schaible, Monte Soukup, Kris Sterbenz, Collier Case, Steve Hillmer or

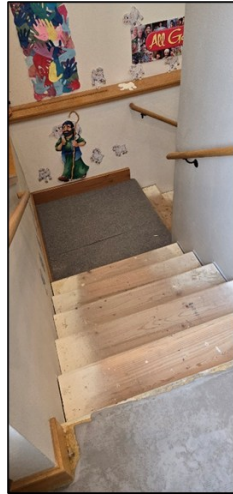
Judy Pope. These are the members of our congregation that have a heart for justice and we pray you do too.

We all believe in upholding human dignity and being in solidarity with those in need. This is an opportunity to turn our faith into action. By showing up, we demonstrate that people power can lead to change. Let us build that power here at Good Shepherd.

***Your presence makes a difference.***

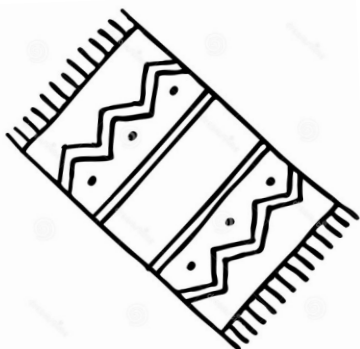
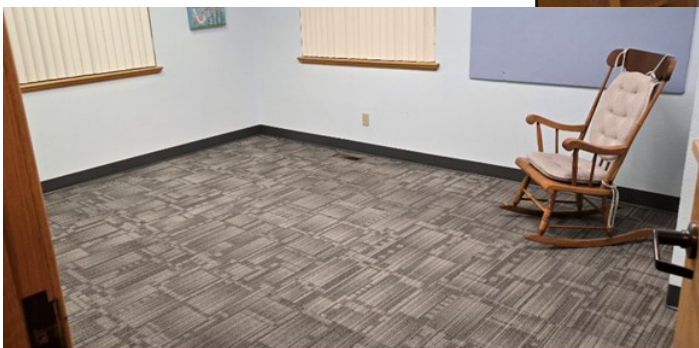
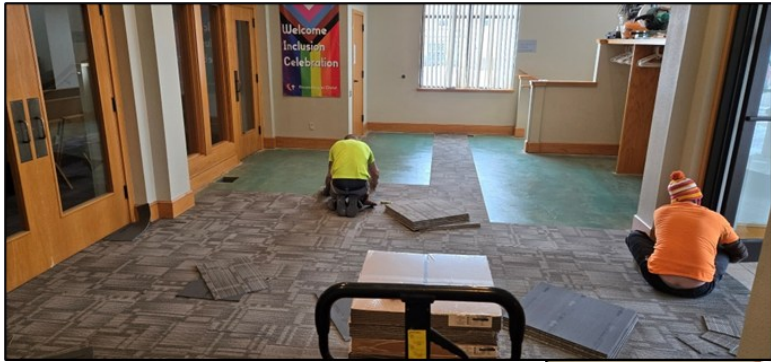






# GSLC's New Flooring

Thanks to the generous financial contributions of so many, as well as the labors of many, we now have new flooring throughout the building. Last year, through a grant obtained by Green Pastures, the downstairs was re-floored. We have now re-carpeted the main floor and stairway from the gifts to the capital campaign. Thank you everyone for your gifts, whatever shape they have taken. Following are a few photos of the floor in progress.



# A Look at the Lawrence Winter Emergency Shelter

*Sharon Miller writes of her experience working at the Winter Emergency Shelter. Please note, she wrote this article at the tail end of the bitter cold weather.*

---

**H**opefully, with warmer weather predicted, last night will be the last needed for the winter emergency shelter at First United Methodist Church to open. When temperatures are below 32 degrees, LCS (Lawrence Community Shelter) reaches 140 guests a night. First United Methodist Church jumps in with a capacity of 25 guests. When that is reached, the University Church opens and receives guests.

Usually, I volunteer two nights a week from 6 pm – 12 am. Upon checking in, our guest received a paper sheet, pillow, and blanket (cots are already set up). I usually help hand out the bedding, and it's a great time to let each guest know we are glad and grateful they are staying with us. The Jax project provides dinner every night when the emergency shelter is open. A couple of volunteers warm up the food, set up the table buffet style, and help serve our guests and clean up. Giving us another excellent opportunity to get to know them better. Later in the evening, volunteers will set out snacks. Coffee, hot water, water, and hot chocolate are available during their stay.

This week, I volunteered on Monday and last night. Monday night was the worst night I've ever worked, volunteering with those experiencing chronic homelessness, since I started volunteering during COVID-19. Truthfully, Monday night was the first time I have ever been scared. I believe some of our guests who suffer from mental illness and are physically tired from the stress of freezing temperatures are at

a breaking point. A gentlemen speaker once said trauma brought them to homelessness, and they are traumatized every day being homeless. Now, there were 4 of us on the shift: two volunteers and two city employees who work on the Homeless Response Team and are trained in de-escalating a situation. The evening ended without any emergency services needed. It took me 2 hours after getting home that night to wind down. Last night was fantastic and what I'm used to. I had time to listen at length with our guests, laugh, and enjoy many of whom I consider friends.

This week, legislators voted against Medicare expansion once again. I again sent in testimony explaining that many of the people who are experiencing chronic homelessness suffer from mental illnesses. AND if the medications needed with wrap-around services were available, they could hold down jobs and be productive people in our community.

Good news: the Homeless Response team is out there, and because of their efforts, 120 people are now in housing with wrap-around services.

A big shout out goes to the First United Methodist Church and its members, John and Marty, as well as all the volunteers, The Jax Project, and employees from the HRT, for everything you do to ensure people are safe, fed, and warm!

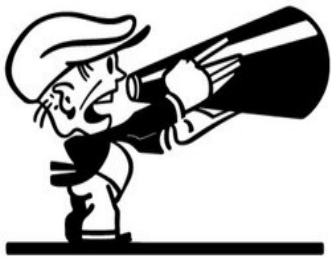
# Music and Worship

## MARK YOUR CALENDAR FOR THESE EVENTS!

### Upcoming Music & Worship Calendar\*

March 5	Ash Wednesday Service	7:00 pm worship
March 12	Midweek Lenten Meal & Worship	6:00 pm meal; 7:00 pm worship
March 19	Midweek Lenten Meal & Worship	6:00 pm meal; 7:00 pm worship
March 26	Midweek Lenten Meal & Worship	6:00 pm meal; 7:00 pm worship
April 2	Midweek Lenten Meal & Worship	6:00 pm meal; 7:00 pm worship
April 9	Midweek Lenten Meal & Worship	6:00 pm meal; 7:00 pm worship
April 13	Palm Sunday	9:00 am & 11:00 am
April 17	Maundy Thursday Service	7:00 pm
April 18	Good Friday Service	7:00 pm
April 20	Easter Sunrise Service	6:30 am, Pioneer Cemetery
April 20	Easter Services	9:00 am & 11:00 am
April 27	LCM at GSLC	9:00 am & 11:00 am

\*The entire GSLC calendar is on our website – [gslc-lawrence.org](http://gslc-lawrence.org)



## ANNOUNCEMENTS DURING LENT

During the season of Lent, we will be giving up verbal announcements. This will help us focus on listening to God's Word. To share important information with our community, be sure to turn your announcements in written form to the office for Baa the Way, slides for Worship 2.0, or the bulletin for Classic Worship.

## GOOD SHEPHERD CHOIR

**GSLC Choir** rehearsals are on Thursdays, 7:00-8:15 pm.

New members are always welcome! Contact Elena Cressy for more information or to be added to the email list. Worship and music contacts are listed on the following page.

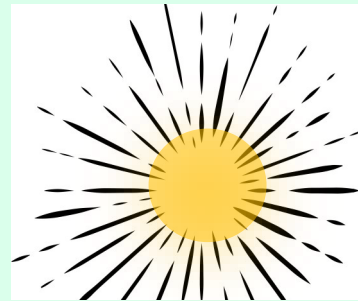


## ORDERS FOR EASTER LILIES AND TULIPS

Orders will be taken soon for white “Easter” lily and yellow tulip plants used to decorate the sanctuary for Easter Sunday (and the following Sunday(s), or until blooms are depleted). Watch for further announcements and order forms; forms will be available on the table outside the sanctuary doors, or in Classic Worship bulletins. **Order deadline:** Sunday, April 6, 2025. If you have questions, please contact Becky Foerschler, 785-842-0904; or [rfoerschler@gmail.com](mailto:rfoerschler@gmail.com).

## LCM AT GSLC

Lutheran Campus Ministry Sunday at Good Shepherd will be April 27<sup>th</sup>. Our congregation helps support this local ministry. Plan to join us and hear from Campus Ministry students and staff about how campus ministry is important for everyone.



## EASTER SUNRISE SERVICE

We hope you can join us for the Easter sunrise service at Pioneer Cemetery on the University of Kansas West Campus. We will gather at 6:15 am for a 6:30 am service and the service will be over by 7:15 am. If you wish to sit, please bring your own chair or stool. In the case of inclement weather, the sunrise service will be cancelled. Please check the church website, Facebook page or answering machine for any weather-related cancellations.

Kelley Witmer, Worship Committee Chair, [kelley@wheatfieldtechnology.com](mailto:kelley@wheatfieldtechnology.com), 785-760-0155  
Elena Cressy, Music Minister – Classic Worship, [elena.cressy@gmail.com](mailto:elena.cressy@gmail.com), 651-354-5520  
Megan Ebke, Worship Leader – Worship 2.0, [megan.ebke@gmail.com](mailto:megan.ebke@gmail.com), 785-844-1830  
Thad Reist, Organist/Pianist—Classic Worship, [tjreist@yahoo.com](mailto:tjreist@yahoo.com), 785-556-0333

# Hospitality Committee

## LENTEN SOUP SUPPERS

During the season of Lent, we hope you will join us for a simple meal of soup, bread, conversation and fellowship on Wednesdays March 12, 19, 26 and April 2 and 9 before worship at 6 pm in the fellowship hall. If you would like to provide bread or a pot or crockpot of soup for one of these meals, or can help with setup, please sign up on the easel in the entry.



Which hand should you use to stir the soup?

*Neither, you should use a spoon.*

Why did the hipster burn his tongue?

*Because he ate his soup before it was cool.*



Is chicken soup good for your health? – *Not if you're the chicken.*

Did you hear about the soup bowl that was almost empty? – *It had a leek in it!*

Why do people always eat clam chowder at seaside restaurants? – *They feel pier pressure to order it!*

## Easter Morning Brunch

One of Good Shepherd's favorite special events is our Easter morning brunch. The brunch will be held this year from 9:30 – 11:00 am on Easter morning, April 20, in the fellowship hall. Watch for sign-up sheets in the near future for those able to bring breakfast casseroles, fruit, pastries, milk or other breakfast items.



## GSLC MEMBER SPOTLIGHT



Have you enjoyed learning about your fellow GSLC members at church? The Hospitality Ministry Team would like to highlight more members, but we need YOUR help!

Please look for a questionnaire in the narthex and fill out as many (or few) questions as you'd like. You may discover you share a common interest, hometown, favorite book, or alma mater with one of your fellow parishoners.

"The spiritual path is not a solo endeavor. We are in it together and the company of spiritual friends helps us realize our interconnectedness."  
- Tara Brach







Please, plan to join us for a fun evening of pancakes, bidding and jazz on Fat Tuesday, March 4th! A Mardi Gras themed pancake dinner will be served from 5-7 pm.

Tickets for pancakes with sausages and a drink are \$8 adults, and \$5 for children ages 3 to 12.

Enjoy jazz music from our Worship 2.0 band while you bid on silent auction items until 7 pm.

Here are a few of our great silent auction items:

Quilted table runner

Golf umbrella

Drill set

Shop Vac

Biemer's BBQ Gift Card

Custom artwork by Kirsten Elson

A-Team Sports Training Facility Gift Certificate



## Why do we eat pancakes the day before Ash Wednesday?

Mardi Gras is French for "Fat Tuesday" and is the celebratory carnival that leads up to the beginning of Lent, the season of fasting and penitence. It gets its name from the practice of consuming rich and fatty foods that would be forbidden during Lent.

Pancakes were traditionally eaten on Fat Tuesday, the day before Ash Wednesday, because they were a way to use up eggs, milk, and sugar before the fasting season of the 40 days of Lent.

This day is also called Shrove Tuesday. Shrove, derived from shrive, refers to the confession of sins as a preparation for Lent. As the final day before the austerity of the Lenten fast, Shrove Tuesday became a day for indulgent foods like pancakes.





# Green Pastures Preschool

Hello from the preschool!

Green Pastures is continuing to chug along happily, our students learning and growing together into a community of families. We are thankful to the church for their continued support of our school. Our goal of educating students and supporting families in these preschool years is being met, and it's wonderful to see! You can see God's love for us in their faces and we hope to keep spreading that love in our community through our little school.

In December we had our annual Christmas Pageant. The children did a wonderful job in the Nativity Play and singing their songs. The families loved it and it was definitely a highlight of the holiday season. Kansas Day and Valentines' Day were also big highlights in the new year. The children enjoyed learning about our state and also made Valentines to share with residents of Cedarhurst Living. We are trying to grow our students' hearts to love others as God loves us.

Registration for next year has already begun. After just one day of open registration we are completely full for next year! This has never happened this early in the year since I've been here, and I am thrilled to start the year off on this foot. Hopefully word of the good work our teachers do is spreading through Lawrence and we can be a light to even more families in the future.

Green Pastures continues to be thankful for the support of Good Shepherd Lutheran! The children love meeting with Pastor for weekly Chapel time and having mystery readers from the church come in. We are so lucky to be a ministry of the church so that we can hopefully enrich the lives of our students and their families. Thank you for your continued support in the new year!

Day Beck  
Director